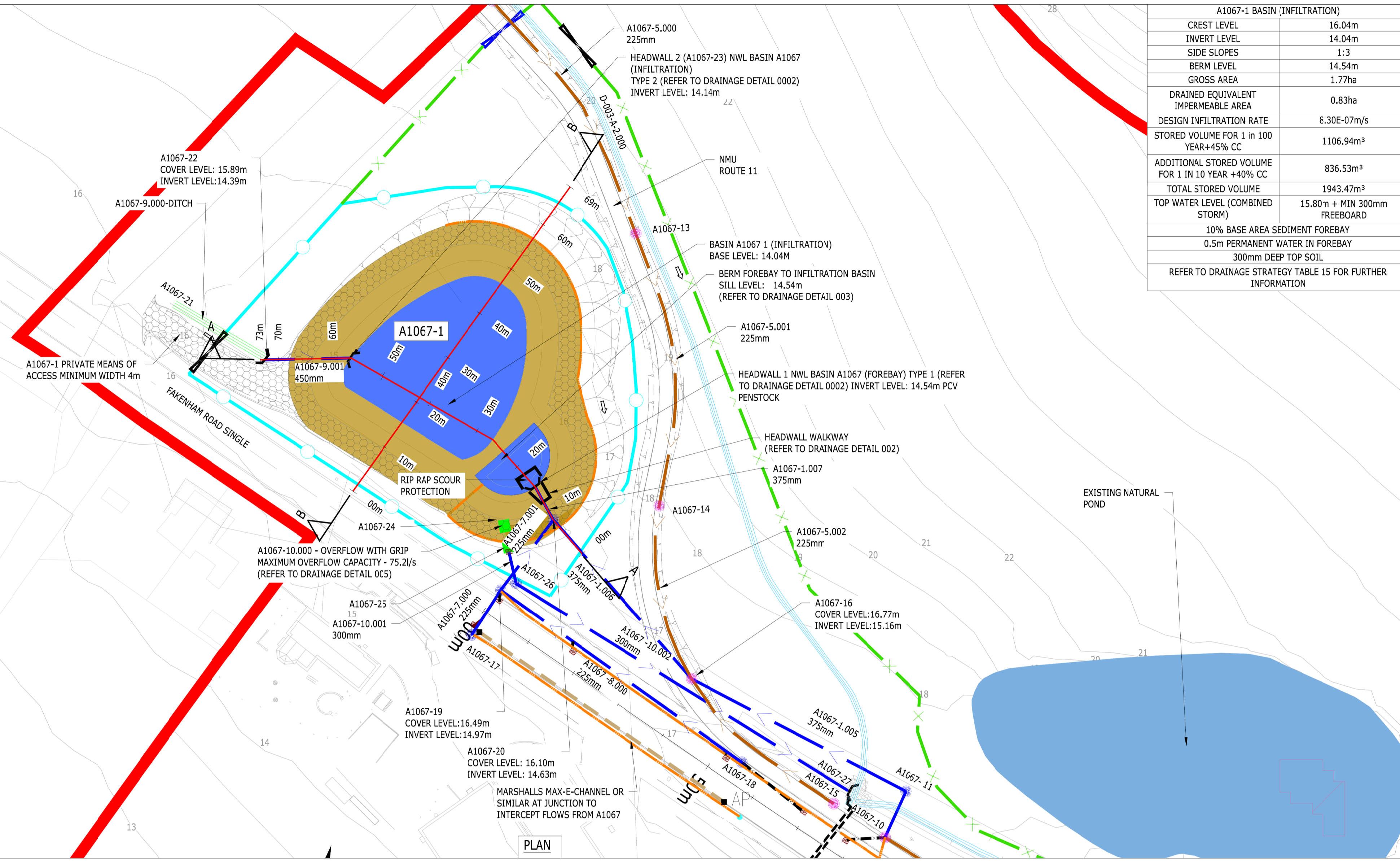


Key:

- Viaduct Carrier Drain
- Grassed Swale (Lined)
- Viaduct Abutment Drainage
- Existing Drainage To Be Retained
- Connection to A47 Drainage
- Proposed Pre Earthworks Ditch (PED)
- Highways Ditch
- Existing Ditch
- Lined Ditch/Swale
- Fence Type 1
- Fence Type 2
- Basin Maintenance Access Track, Minimum 4m Width
- Fence Gate
- Proposed Culvert/Piped Ditch
- Badger Culvert
- Inlet/Outlet Headwall (Type 2 Unless Otherwise Stated)
- Check Dam in Ditch
- Flood Compensation Area
- Flood Zone 3A
- Surface Water Flooding (1 in 100 Year)
- Vegetated MSE Bagwork
- PCV
- Pollution Control Valve
- C - Culvert/Piped Ditch
- X - Outfall Number (1-15)
- Y - Size (A - 0.3m, B - 0.45m, C - 0.75m, D - 0.9m)
- Z - Culvert Reference
- D - Ditch Type (D - Pre-Earthworks, H - Highways)
- X - Outfall Number (1-15)
- Y - Ditch Size (A - 0.3m, B - 0.45m, C - 0.6m D - 0.75m, E - 1.0m)
- Z - Ditch Reference



A1067-1 BASIN (INFILTRATION)

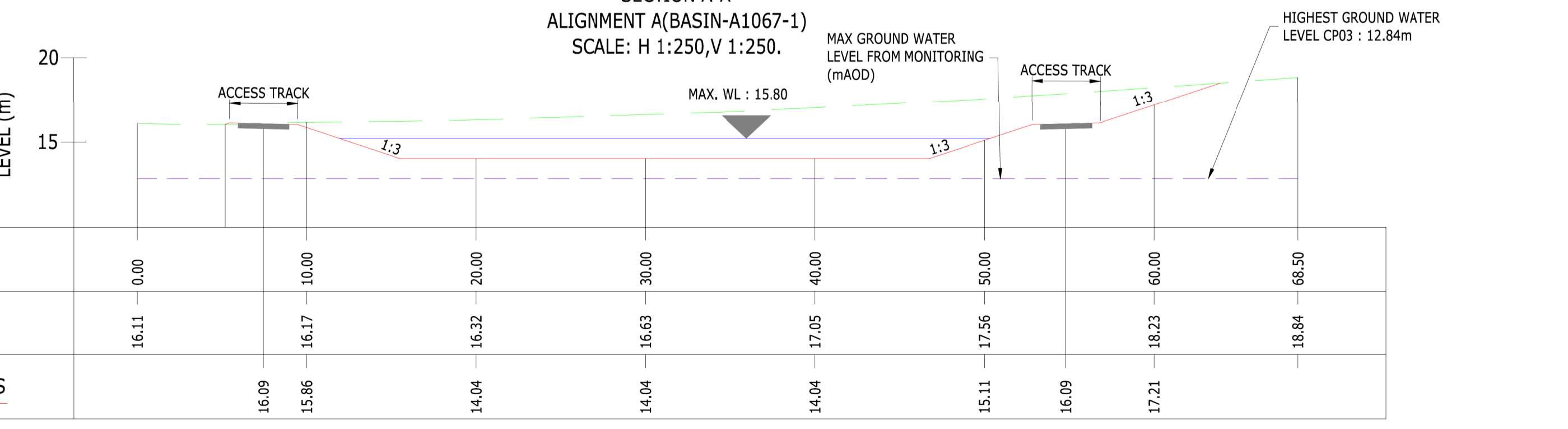
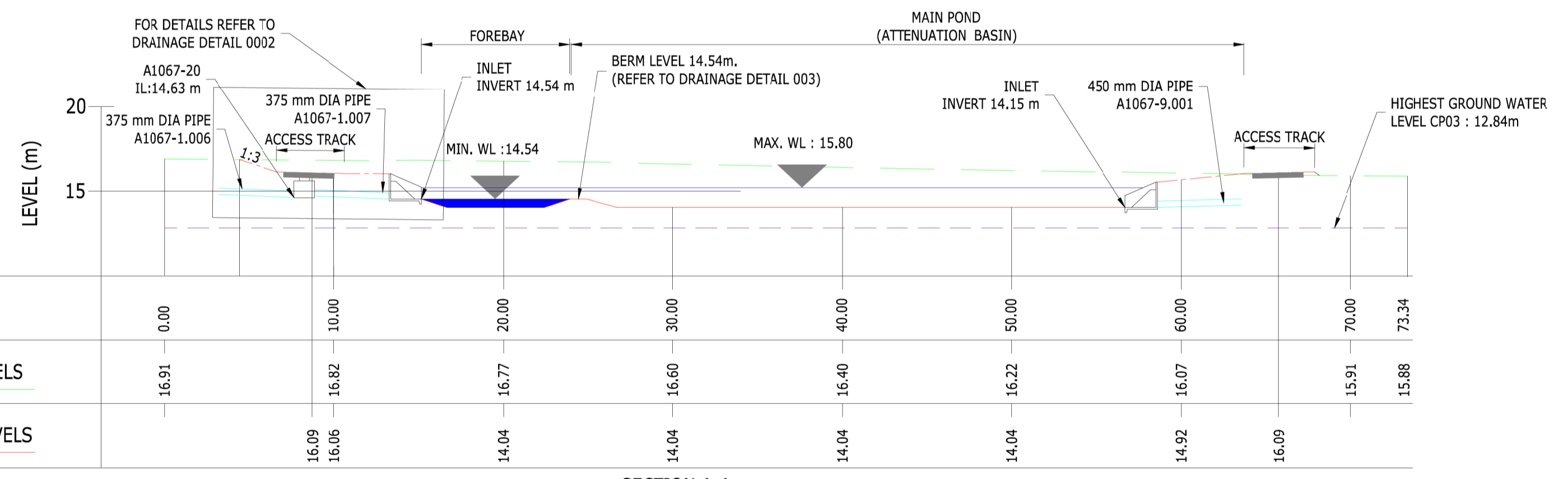
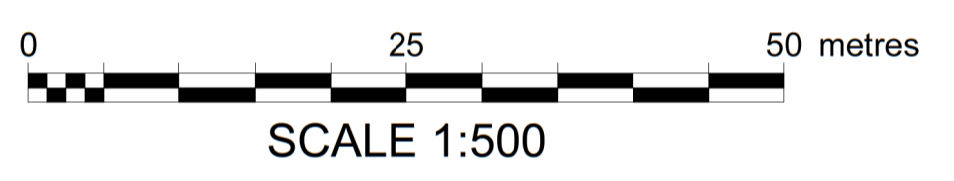
CREST LEVEL	16.04m
INVERT LEVEL	14.04m
SIDE SLOPES	1:3
BERM LEVEL	14.54m
GROSS AREA	1.77ha
DRAINED EQUIVALENT IMPERMEABLE AREA	0.83ha
DESIGN INFILTRATION RATE	8.30E-07m/s
STORED VOLUME FOR 1 in 100 YEAR +45% CC	1106.94m³
ADDITIONAL STORED VOLUME FOR 1 in 10 YEAR +40% CC	836.53m³
TOTAL STORED VOLUME	1943.47m³
TOP WATER LEVEL (COMBINED STORM)	15.80m + MIN 300mm FREEBOARD
10% BASE AREA SEDIMENT FOREBAY	
0.5m PERMANENT WATER IN FOREBAY	
300mm DEEP TOP SOIL	
REFER TO DRAINAGE STRATEGY TABLE 15 FOR FURTHER INFORMATION	



- Notes:**
- Do not scale from this drawing.
 - All dimensions are in metres unless otherwise stated.
 - This drawing is to be read with all other relevant drawings and reports.
 - All works to be in accordance with the Specification for Highway Works.
 - These drawings supplement 4.04.00 PK1002-RAM-HDG-MLE-SG-DZ-0001 Drainage Strategy Report.
 - For planting and amenity arrangements, refer to 2.07.00 Landscaping Design Plans NCCT41793-RAM-ELS-MLE-DR-NZ-0001 to 0010
 - For drainage details, refer to 2.08.04 Drainage Typical Details PK1002-RAM-HDG-MLE-DE-DZ-0001 to 0006. For pipe gradients, manhole details refer to DS Appendices.
 - Please refer to 3.03.00 Environmental Statement Chapter 3: Description of Scheme for the Rochdale Envelope flexibility included within the design for the purposes of Environmental Impact Assessment.
 - For fencing details, refer to 2.03.00 General Arrangements Plans. PK1002-RAM-HGN-MLE-DR-CH-0002 to 0006
 - This drawing is for planning application purposes only, it is not a construction issue drawing.

Key:

- Red Line Boundary
- Proposed Drainage Basin
- Existing Watercourse
- Retaining Wall
- Surface Water Manhole (HCD F3-F6)
- Catchpit (HCD F11)
- Proposed Gully (HCD F13)
- Inline Outlet to Triangular Surface Water Channel (HCD F22) (1/2/3 Chambers Depending on Requirements)
- Inline Outlet to Trapezoidal Surface Water Channel (HCD F23) (2/3 Chambers Depending on Requirements)
- Catchpit (HCD F12)
- Flow Control Chamber
- Proposed Combined Kerb Drainage Outlet/Access Point
- Existing Manhole To Be Retained
- Surface Water Carrier Drain
- Proposed Combined Filter/Carrier Drain (HCD F2 Type H)
- Combined Kerb Drainage (HCD B16 Type 25A Class E600)
- Proposed 100mm dia narrow filter drain (HCD F18)
- Proposed Gully Lead
- Concrete Surface Water Channel (HCD B14, type A)
- Grip Overflow



Mapping reproduced by permission of Ordnance Survey on behalf of HMSO.
© Crown copyright and database rights 2024 Ordnance Survey 100019340.

A1 - Authorised for Planning

C01	AJ	KJ	SS	08/02/24
REVISION	DRAWN	CHECKED	APPROVED	DATE

Norfolk County Council
Grahame Bygrave
Interim Executive Director of
Community and Environmental Services
Norfolk County Council
County Hall, Martineau Lane
Norwich NR1 2SG

Norwich Western Link
ferrovial construction
RAMBOLL

DRAWING TITLE
NORWICH WESTERN LINK
BASIN LAYOUT
SHEET 1 OF 7

DRAWING STATUS
A1 - AUTHORISED FOR PLANNING

DRAWN	CHECKED	APPROVED	AUTHORISED
AJ	KJ	SS	FQC

SCALE @ A1 SIZE	DATE	REVISION
AS SHOWN	08/02/24	C01

DRAWING NUMBER
PK1002-RAM-HDG-MLE-DR-DZ-0541